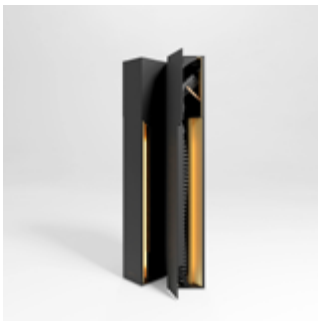


ONE

Specification sheet.



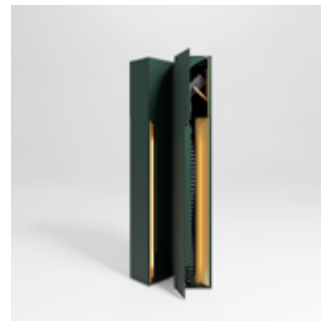
Colors.



Imperial Black



Cotton White

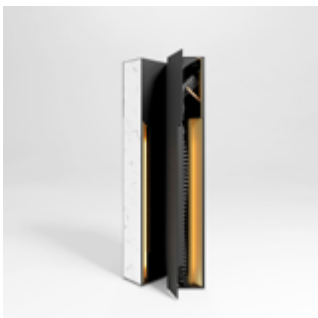


Medusa Green

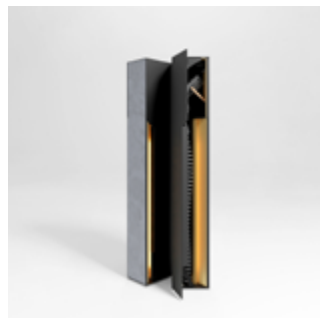


Midnight Blue

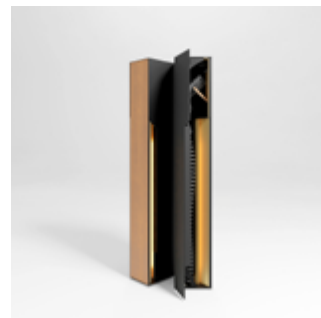
Materials.



Marble



Natural Stone



Wood



Specifications.



Charging controller

Phoenix Contact Charx SEC Series
SEC-3XXX / SEC-1000



Connectivity

Ethernet, MQTT, Modbus TCP/RTU, REST API
Optional 4G/2G connection



Charging specifications

Mode 3 charging capability 3,7 - 13,5kW
3 x 400V+N (16A - 20A per phase)



Overload protection

Dynamic load balancing



Web application

Integrated web app to manage
charging sessions



Charging output

Integrated cable with type 2 plug
20A



OCPP compatibility

Connect with provider of choice
Optional MID certified monitor required



Energy monitoring (optional)

1 x MID certified energy monitor
Calculation of transaction costs



Authentication

Optional RFID integration



Open platform

For own applications
PLC Next based



Residual Current Detection

Built-in Type B RCD / Residual Current Monitor
30mA AC/DC Type B or 6mA DC / 30mA AC Monitor



Dimensions

1152 x 154 x 186 mm
H x W x D



Component housing

Built-in utility closet
450 x 315 x 155 mm



Cable

5G 6mm² + 3 to 7 x 0.25mm² (UTP)
Between components and charger



Max. cable distance

100 meters
Between components and charger



Ambient lighting

LED courtesy light
Separate control



Charger housing

Powder coated steel & aluminium